

# AQUARIUM INSTRUCTIONS FOR USE

For Household use only

KEEP THESE INSTRUCTIONS FOR FUTURE REFERENCE



## Aquarium Kit Model: AP360-6FFP

Children under the age of 13 should be supervised by an adult with the setup, maintenance and fish care

## 1. Your Aquarium

People of all ages enjoy looking at aquariums. Aside from the belief that an aquarium is beautiful, many believe owning an aquarium can be relaxing, rewarding and a great conversation piece all at the same time. You will find you will have many enjoyable hours with your new aquarium and fish.

### Included in your Aquarium Kit:



## 4. Adding Gravel

- Rinse everything under running water; tank, gravel, stones, plastic plants and other decorations, etc. in colander or new bucket.
- Never use soaps as they can harm fish.
- Place gravel, rocks and decorations in the tank now, spreading the gravel evenly across the bottom of the aquarium. Add decorations such as plastic plants and ornaments at this time.



Gravel and Decorations are not included with this aquarium kit.

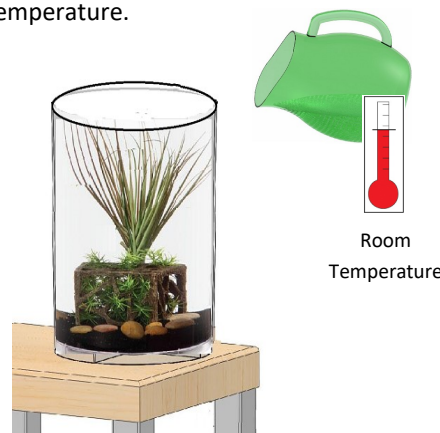
## 2. Important Safety Instructions

Please read this section before operating this unit. **For Household Use Only.** Confirm that your tank has not been damaged during shipment before you start the setup process. Completely set up the aquarium before plugging filter and light into an electrical outlet. To avoid having your plug or electric outlet becoming wet it is best to form a drip loop in your cords as shown below. Use of a GFCI rated outlet or circuit is recommended.



## 5. Adding Water

Fill the aquarium with water to within one inch from the top of the tank. Treat water with a de-chlorinator to remove chlorine and chloramines from tap water that can be harmful to your fish. Confirm water temperature in aquarium has reached room temperature.



## 3. Tank Placement

Leave enough space in back of the aquarium to allow easy access to the filter and various electrical cords from the electrical equipment.

### Good places for your aquarium

- On a table or aquarium stand that's capable of bearing the weight of your filled aquarium.

### Places to avoid

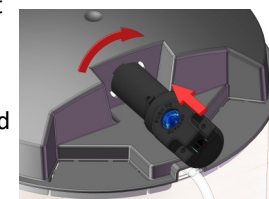
- Near direct sources of sunlight (e.g. windows), unwanted algae growth may occur.
- Near direct sources of heat or air conditioning (e.g. radiator, forced air vent).
- Around sources of noise (e.g. stereo speakers, TV).
- Drafty areas.
- Do not place aquarium on any good surface that can be damaged by water.
- Where water can come in contact with other electrical appliances.



## 6. Hood Assembly

Place the Hood on top of the tank and make sure it is fully seated.

Insert the LED light into back of the hood, turning the unit to the right and tighten snugly to secure it. Insert power adaptor plug into the LED light electrical port.

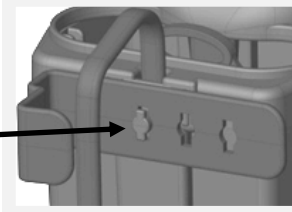


Plug the power adaptor into standard 110 volt wall socket. Use of a GFCI (Ground Fault Circuit Interrupter) is always recommended.

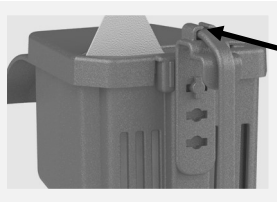


## 7. Installing Power Filter

Locate the adjustable hanger bracket inside the box. Place the hanger bracket at 90° and align one of the adjustment holes onto the mounting post, rotating it upwards until hanger is vertical. Install the filter inside the aquarium by hanging the filter onto the aquarium rim.



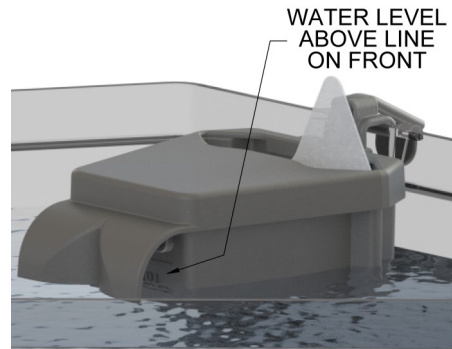
PLACE HANGER AT 90 DEGREES ON POST



ROTATE HOOK VERTICAL, THEN PLACE ELECTRICAL CORD INTO CORD HOLDER AT THE TOP OF THE MOUNTING BRACKET

## 8. Required Water Level

The water level of the filled aquarium should be above the line on the front of the filter housing. To raise or lower the Filter adjust the hanger by rotating the hanger 90 degrees, remove it, and replace it in an alternate alignment hole.



WATER LEVEL ABOVE LINE ON FRONT

## 9. LED Light Timer Operation

The LED light comes with a built-in timer so you can set the amount of time you would like the LED light to remain on. Please note, the timer function has to be set daily. The following day the LED light will default back to factory settings with the LED light turning off after two hours of operation in order to preserve battery life.

### Operating Instructions:

- At desired start time press the on/off blue button to turn light on.
- To set timer for 1 hour, press and hold down the blue button for 3 seconds and then release. Red LED's will blink once, indicating the light will shut off in 1 hour.
- To set timer for 2 hours, press and hold down the blue button again for another 3 seconds and release. Blue LED's will blink twice, indicating the light will shut off in 2 hours.
- To set timer for 4 hours, press and hold down the blue button for another 3 seconds and release. Green LED's will blink three times, indicating the light will shut off in 4 hours.
- To set timer for 8 hours, press and hold down the blue button for another 3 seconds and release. White LED's will blink four times, indicating the light will turn off in 8 hours.
- You can stop or reset the timer by simply pressing the on/off blue button.

## LIMITED WARRANTY

KOLLER PRODUCTS LLC warrants this aquarium product to be free from defects in material and workmanship under normal use and service and according to the provisions as specified in the accompanying assembly and operating instructions, for a period of 1 year from date of purchase.

This warranty does not cover and KOLLER PRODUCTS LLC is not liable for the cost of repair or replacement of parts which have been subject to misuse, negligence, accident, improper installation, damage during shipment or handling, normal deterioration due to wear and exposure or defects caused by unauthorized parts or modification.

**UNDER NO CIRCUMSTANCES WILL KOLLER PRODUCTS LLC BE LIABLE FOR ACCIDENTAL OR CONSEQUENTIAL DAMAGES, INCLUDING BUT NOT LIMITED TO LOSS OF PROPERTY OR EQUIPMENT.**

Some states do not allow the exclusion or limitation of incidental or consequential damages, or limitation on how long an implied warranty lasts, so the above

limitations or exclusions may not apply to you. This warranty gives you the legal rights, which vary from state to state.

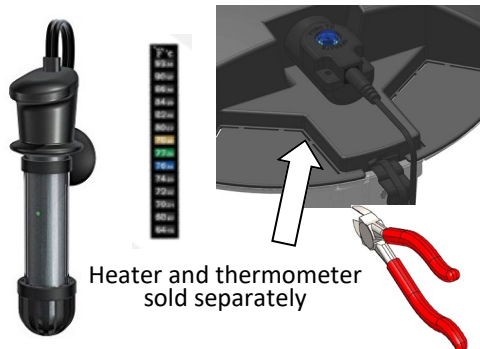
## 10. LED Light Operation

To turn LED light on or off, press the blue button switch on top of the light unit. To select a specific light color, continue to press the blue button until desired color is located. There are 7 color selections to choose from plus 4 transitioning and color combinations.



## 11. Optional Heater

If you are adding an optional heater, remove the knock-out section in the hood shown below by using side-cutting pliers, hacksaw, or small saw and cutting the connected tabs. Read and follow the heater's instructions. Check with your retailer for recommended heater settings. Adjust heater settings as directed.



Heater and thermometer sold separately

## 12. LED Light FCC Compliant



FCC Verification Tested  
Certificate Of Conformity  
# PRSZ17072808E

This device complies with part 15 of the FCC Rules. Operation is subject to the following two conditions: (1) This device may not cause harmful interference, and (2) this device must accept any interference received, including interference that may cause undesired operation. Changes or modifications not expressly approved by the party responsible for compliance could void the user's authority to operate this device.

NOTE: This equipment has been tested and found to comply with the limits for a Class B digital device, pursuant to part 15 of the FCC Rules. These limits are designed to provide reasonable protection against harmful interference in a residential installation.

## Warranty Repairs or Replacement

### HELP OR COMMENTS

**IF ANY COMPONENTS ARE DAMAGED OR MISSING  
DO NOT RETURN TO THE STORE**

### CONTACT

[customercare@kollerproducts.com](mailto:customercare@kollerproducts.com)

**(800) 545-1344**

Whisper® is a registered trademarks of Spectrum Brands

Manufactured by Koller Products®, LLC  
Shawnee, KS USA